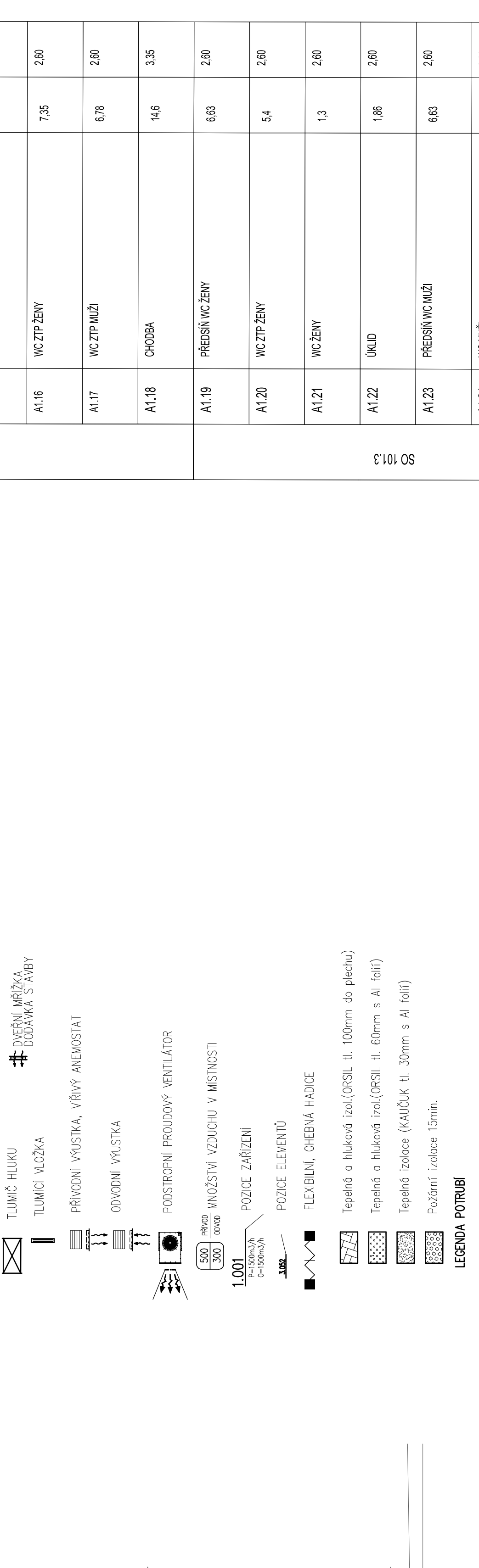
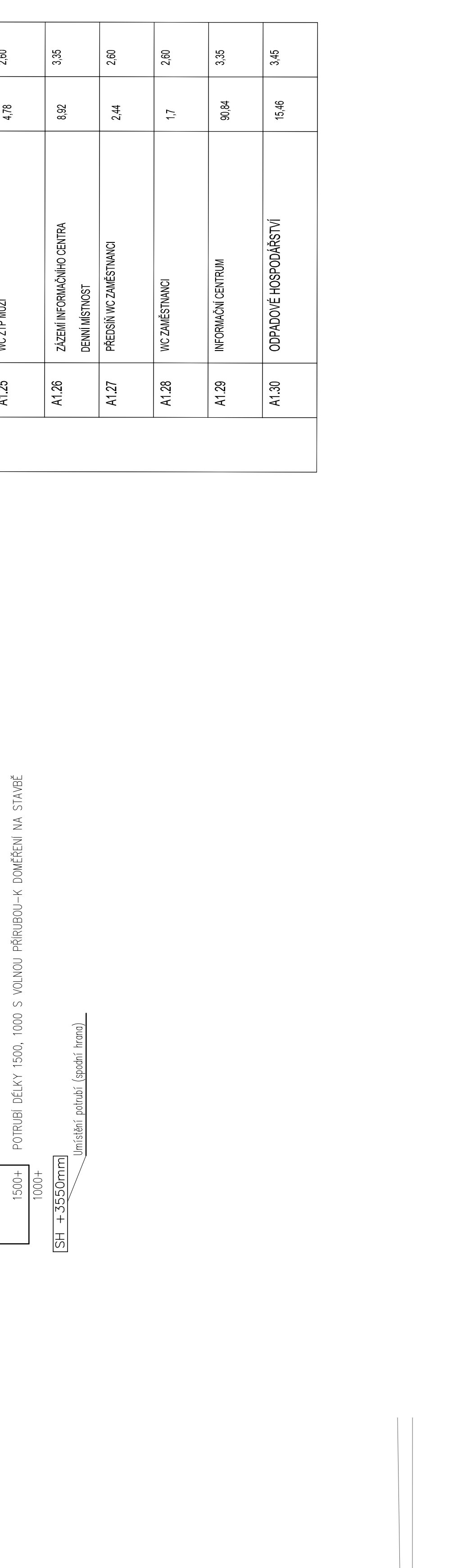


SOLENNI VOIE	SOLENNI	VOIE
--------------	---------	------

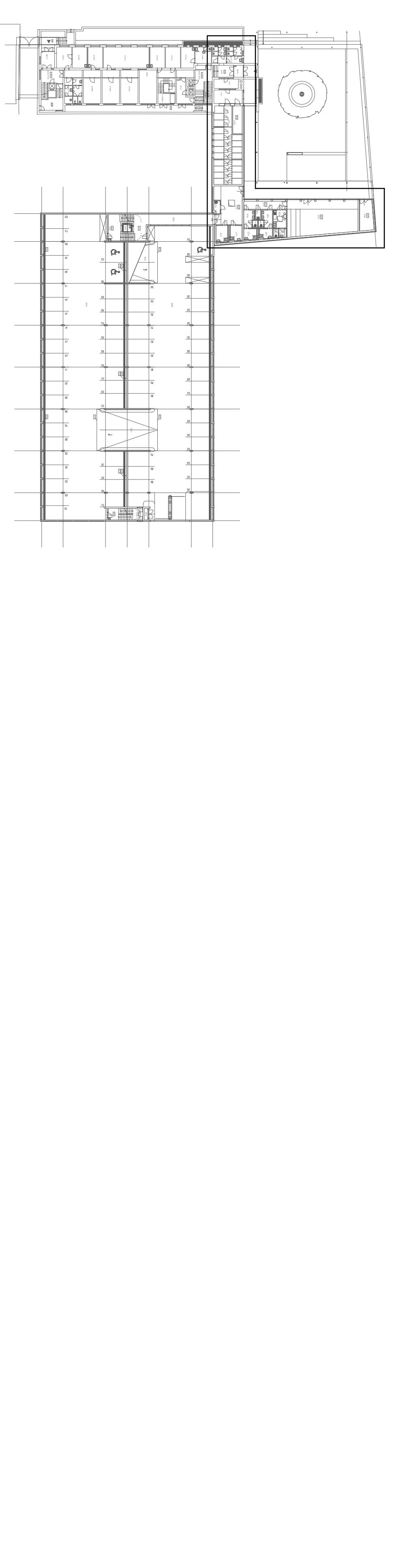
3/23	DOMU	PLANNING VS. UP-TO-PARASITICITY	3/23
------	------	---------------------------------	------



A1.24	WG.Mi.Ž	1,3	2,60
-------	---------	-----	------



SCHEMA OBIETTI



$\lambda/1000 = 202,10 \text{ nm}$ . Ep

**Copyright Clearance Center**  
 This journal is registered with the Copyright Clearance Center, Inc., 222 Rosewood Drive, Danvers, MA 01923. Organizations in the USA who are also registered with the C.C.C. may therefore copy material (beyond the limits permitted by sections 107 and 108 of US copyright law) subject to payment to C.C.C. of the per copy fee of \$12.00. This consent does not extend to multiple copying for promotional or commercial purposes.  0896-0262/2003 \$12.00.

**ISI Tear Sheet Service**, 3501 Market Street, Philadelphia, PA 19104, USA, is authorized to supply single copies of separate articles for private use only. Organizations authorized by the Copyright Licensing Agency may also copy material subject to the usual conditions. For all other use, permission should be sought from Cambridge or the Cambridge University Press. This journal is registered with the Copyright Clearance Center, Inc., 222 Rosewood Drive, Danvers, MA 01923. Organizations in the USA who are also registered with the C.C.C. may therefore copy material (beyond the limits permitted by sections 107 and 108 of US copyright law) subject to payment to C.C.C. of the per copy fee of \$12.00. This consent does not extend to multiple copying for promotional or commercial purposes.  0896-0262/2003 \$12.00.

**ISI Tear Sheet Service**, 3501 Market Street, Philadelphia, PA 19104, USA, is authorized to supply single copies of separate articles for private use only. Organizations authorized by the Copyright Licensing Agency may also copy material subject to the usual conditions. For all other use, permission should be sought from Cambridge or the Cambridge University Press.

[illegible]